

△
DOXA

GOSPEL ACCESS + ALIGNMENT



TABLE OF CONTENTS



03	THE PREAMBLE A vision for gospel access and alignment	15	FUNCTION AND DECLARATION How DOXA functions on a practical level
04	THE MISSION OF GOD What the Bible says and the Spirit is saying	18	BEYOND MOBILIZATION A look into the process of effective engagement
05	THE PROPHETIC WORD A word from God from the World Assemblies of God congress	20	KEY TERMS AND DEFINITIONS How DOXA is defining key terms
06	STATE OF THE GOSPEL Where we are taking the gospel and what we can do if united	22	STRATEGIC QUESTIONS Important questions regarding the vision of DOXA
08	THE LOST Every DOXA missionary is needed as we align to close the gospel access gap	24	THE FINAL ADDRESS In the power of the Holy Spirit

GOSPEL ACCESS

GOSPEL ALIGNMENT

Jesus is worthy. He is worthy to be worshipped by every tribe, tongue, people, and nation. The big story of the Bible across time reveals that the worship of the nations is indeed God's plan. The Bible is God's playbook showing how all redemption history unfolds, a history centered on the nations, all nations, worshipping Jesus. In today's world of 8.2 billion people, there are thought to be over 17,000 "nations." Of these, 6,600 nations (or people groups) are considered unreached. Quantitatively, this means they have less than two believers for every 100 people, and qualitatively, they do not yet have the ability to reach their own without external catalytic missionary help. Together these unreached people groups number 3.9 billion people.

That is 48 percent of the world. Yet only 3 percent of all global missionaries work among the unreached.

Even more shocking, of the approximately 6,600 unreached people groups around 2,085 remain unengaged with the gospel.

It is tragic that 2,000 years after the resurrection there are still around 2,085 unengaged people groups on earth. This means that these God-loved peoples have no missionaries working among them, no churches, and no believers that we know of—or at best, very few.

The DOXA partnership has been formed so that we together may give Jesus a gift. By 2033, we would like to be able to affirm that every people group has been engaged with the gospel, that every people group has access to Jesus.

This does not mean that the work will be finished; in fact, the hard work of seeing disciples made and churches planted among the previously unengaged will just be starting. Further, we must continually work toward church planting multiplication among *all* frontier peoples, *all* under-engaged peoples, and *all* unreached peoples until Jesus comes.

DOXA is a global, voluntary, receiving partnership started and stewarded by the World Assemblies of God Fellowship (WAGF) missions commission. We are committed to working with our national church partners in the World Assemblies of God Fellowship and beyond (God's great global family) with the end of engaging every unengaged people group by 2033, and then working to see the fruitful engagement of every unreached people group on earth. We know we cannot reach the world by ourselves. Together, wherever the Spirit has placed us to make disciples, all the Church shall indeed take all the gospel to all the world. Jesus shall indeed have for himself a worshipping people made up of every people on earth.

In that endeavor,

Dick Brogden

DOXA Global Coordinator



THE MISSION OF GOD IN THE WORD OF GOD

The word of God has an undeniable focus on the nations (“ethne”): distinct people groups that have their own language, religion, culture, and geographical space.

In you all the **NATIONS** of the earth will be blessed. (Gen. 12)

All **NATIONS** shall see His glory. (Isa. 66)

Every **NATION** represented at Pentecost. (Acts 2)

Ask of Me and I will give you the **NATIONS**. (Ps. 2)

Make disciples of all the **NATIONS**. (Matt. 28)

A multitude from every tribe, tongue, people, and **NATION** around the throne. (Rev. 7)

**OUR GOD IS AN ALL NATIONS GOD.
THE BIBLE IS AN ALL NATIONS BOOK.
THE CHURCH IS AN ALL NATIONS CHURCH.
THE COMMISSION IS AN ALL NATIONS ASSIGNMENT.**

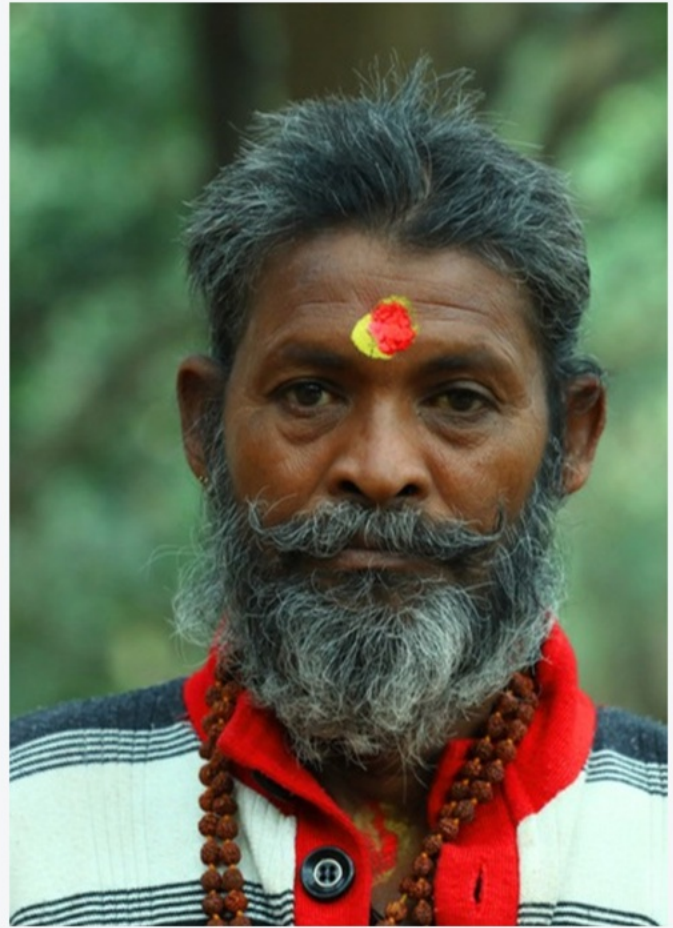
*“If everything is mission,
nothing is mission.”*

Bishop Stephen Neill

Cross-Cultural Missionary: A person called by God, empowered by the Spirit, and sent by the Church to cross cultural and linguistic barriers, living incarnationally, to make disciples of Jesus by establishing the Church through the communication of the gospel.

THE PROPHETIC WORD

*Given by General
Superintendent
Doug Clay at the
2024 World
Assemblies of God
Congress*



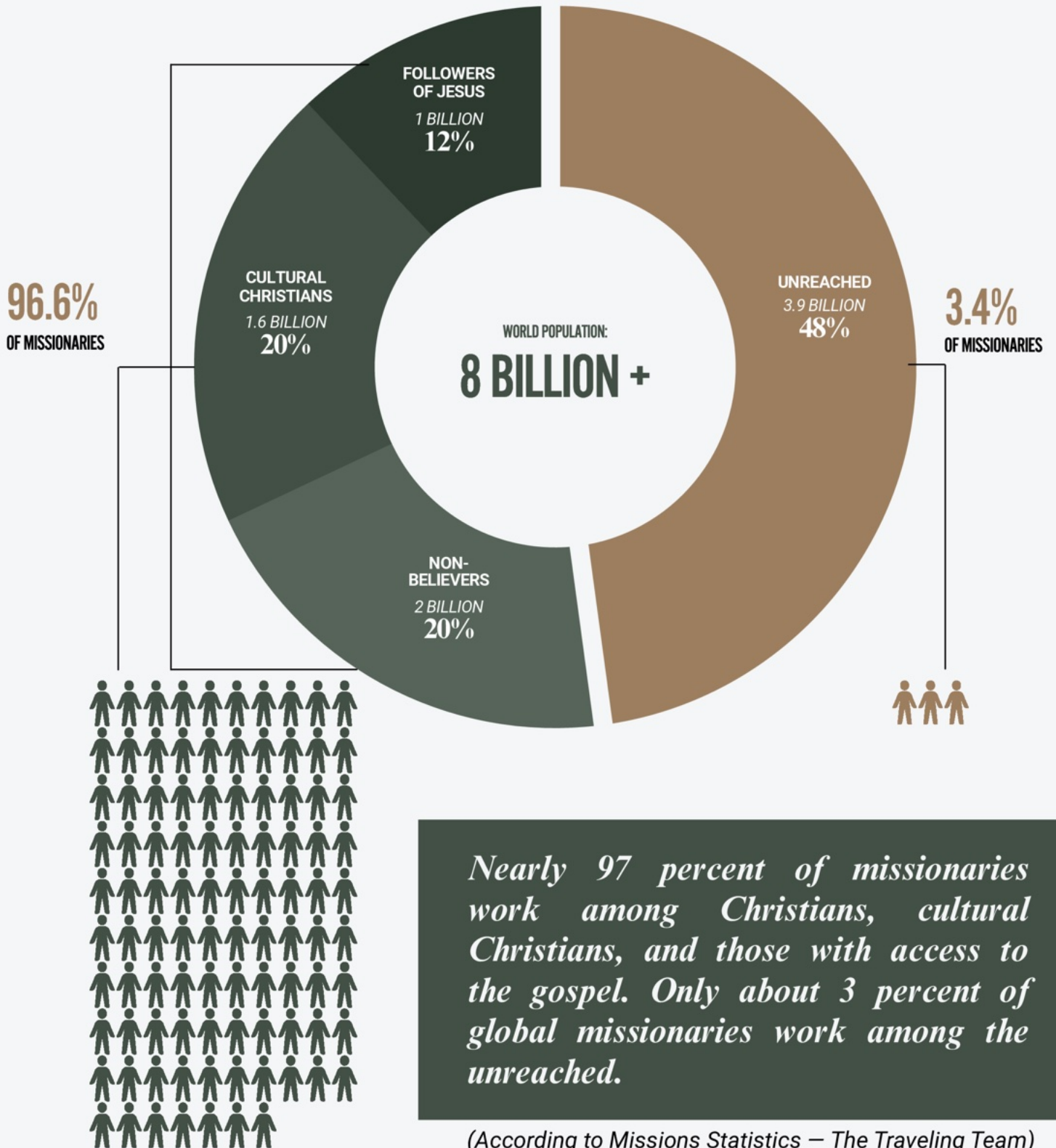
The Spirit of the Lord says, “I have and am calling My people to the unreached people groups of the world, to the places where My name is not yet known, but My Spirit is already there. The time is now to step into this space. I am stirring a passion for the lost and the forgotten, for the tribes and tongues that are hidden from the world but not hidden from Me.

RISE UP, ASSEMBLIES OF GOD, for I will go before you, breaking down the walls of fear, indifference, hostility, and discrimination. I will open doors that no person or government can shut. As you go, My Spirit will rest upon you with power, wisdom, and audacious courage. You will speak words of life to those who dwell in darkness, and they will see My light.”



STATE OF THE GOSPEL

Current global missionary distribution as of 2025:



(According to Missions Statistics – The Traveling Team)



*Imagine what we could do together.
We could have fruitful church planting
teams among every unreached people
group on earth!*

WE NEED A GLOBAL GOSPEL VISION A GLOBAL GOSPEL ALIGNMENT

In the World Assemblies of God Fellowship (WAGF) there are:

**88.9 MILLION PEOPLE
IN 451,458 CHURCHES**

**188 NATIONAL CHURCH PARTNERS
IN 160 COUNTRIES**

**129 NATIONAL MISSIONS DEPARTMENTS
IN 108 COUNTRIES**



THE LOST

7 Billion People

THE UNREACHED

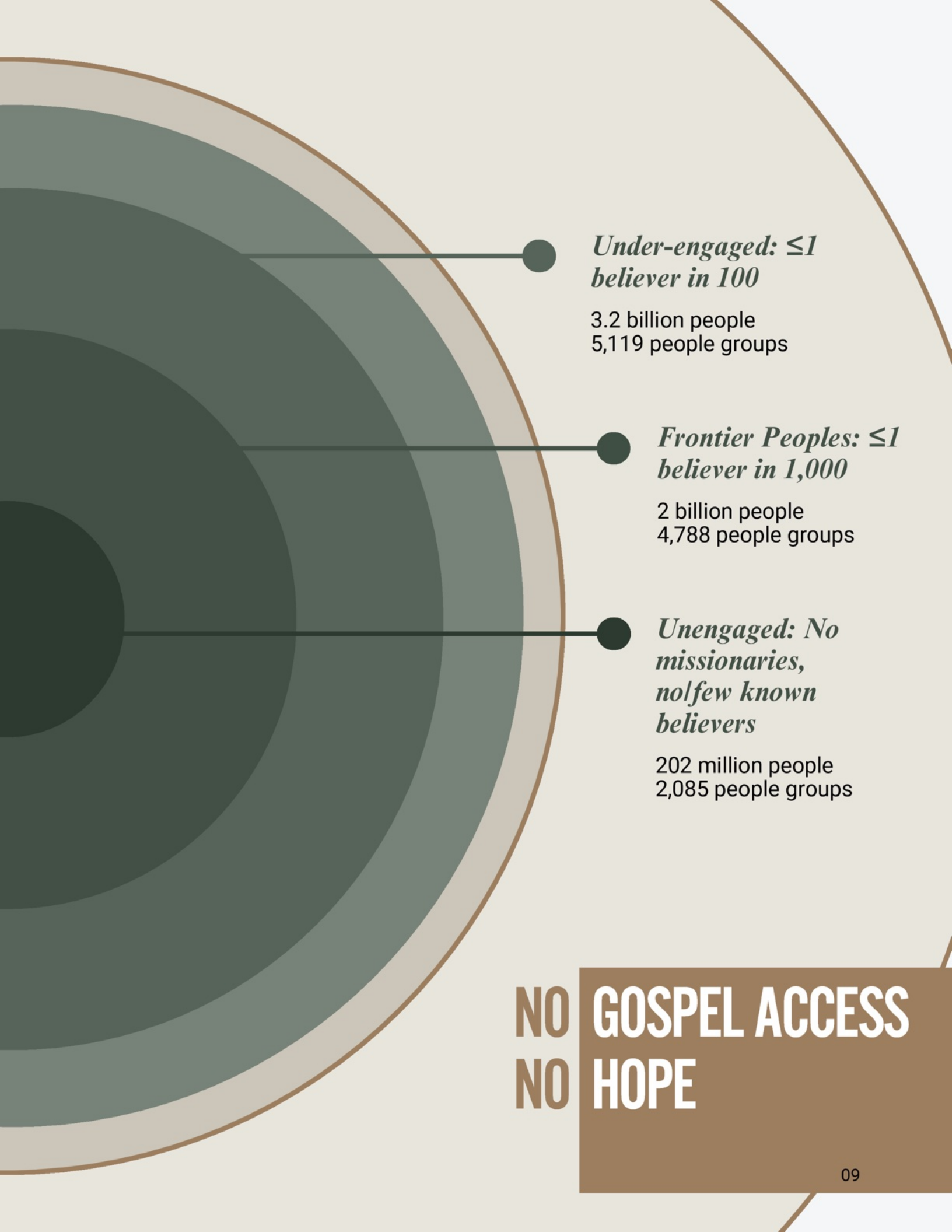
*Gospel Access
Unreached: ≤ 2
believers in 100*

3.9 billion people (49%)
6,602 people groups

(DOXA considers Secular Peoples in Greater Europe that are <2% evangelical as unreached, which is why the total of 3.9 billion is higher than the traditional 3.4 billion)

*Classic Unreached: ≤ 2
believers in 100*

3.4 billion people (42%)
Joshua Project figure



Under-engaged: ≤ 1 believer in 100

3.2 billion people
5,119 people groups

Frontier Peoples: ≤ 1 believer in 1,000

2 billion people
4,788 people groups

Unengaged: No missionaries, no few known believers

202 million people
2,085 people groups

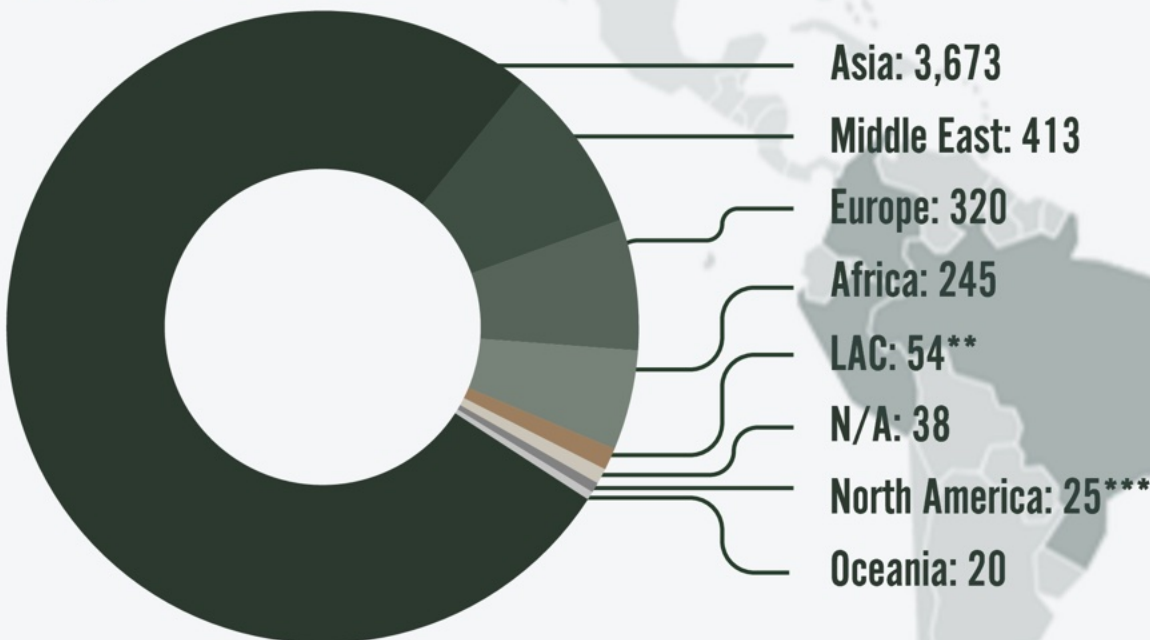
NO GOSPEL ACCESS
NO HOPE

Of the 3.9 billion unreached

2.0 billion are frontier peoples.

Less than 1 believer in 1,000

*There are approximately **4,788** frontier people groups scattered throughout the world**



**www.joshuaproject.net (Joshua Project lists 34 of these people groups in the USA)*

***Latin America & Caribbean*

****Including non-Spanish Caribbean*

A Note on the List of Unengaged Unreached People Groups

The DOXA list of unengaged peoples is dynamic and will change as we (or other evangelical missions agencies) engage these unengaged peoples and/or as further ethnographic research from the field gives us a more accurate understanding of which is actually unengaged. Our list was compiled by consulting the research done by the International Mission Board (IMB), the Engage Network (TENet), and Joshua Project (JP). Our DOXA list is based largely on the IMB/JP research and includes unengaged peoples less than 500 (as even smaller people groups must have gospel access) and the deaf (as they have their own language and culture within the people group they belong to). Our list does not include historic Christian peoples (such as the Egyptian Copts, since there

are renewal movements among them) or diaspora peoples (such as Egyptian Muslims working in Saudi Arabia, since we view these diaspora peoples as part of their home culture, and therefore, church planting teams engaging Egyptian Muslims should have an inclusive strategy that accounts for diaspora members of that people group). It is important to note that a list of unengaged peoples will be fluid as new data emerges, and while the list serves as a helpful starting point, the guiding missiological concept will ever be gospel access—who does not have adequate witness? It is there we will concentrate our prayers, efforts, and personnel, and toward the peoples and places of least gospel access, we will align our resources and attention.

Of the 2.0 billion frontier peoples

202 million are unengaged.

No known (or very few) believers

*There are approximately **2,085** unengaged people groups found all over the world.*

AFRICA	308	LATIN AMERICA & CARIBBEAN	148
Central Africa	61	Andean	44
East Africa	95	Brazil	100
Islands of East Africa	5	Central America	1
Southern Africa	34	Mexico & Latin America	1
West Africa	113	South Cone	2
ASIA	1,301	MIDDLE EAST	222
Central Asia	10	Middle East	222
North Asia	161	NO WAGF REGION/BLOC	19
North East Asia	6	Smaller Nations	19
South Asia	946	NORTH AMERICA & NON-SPANISH CARIBBEAN	15
South East Asia	178	Non-Spanish Caribbean	15
EUROPE	55	OCEANIA	17
Central Europe	1	Oceania	17
East Europe	24		
North Europe	6		
South Europe	12		
The Balkans	6		
West Europe	6		

Unengaged Unreached People Groups by Religious Affinity

Hinduism	697
Islam	632
Animism	596
Buddhism	82
Other	54
Judaism	12
Secular	10
Sikhism	2

THE PARTNERSHIP VISION

Revelation 7:9–10

After this I looked, and there before me was a great multitude that no one could count, from every nation, tribe, people and language, standing before the throne and before the Lamb.

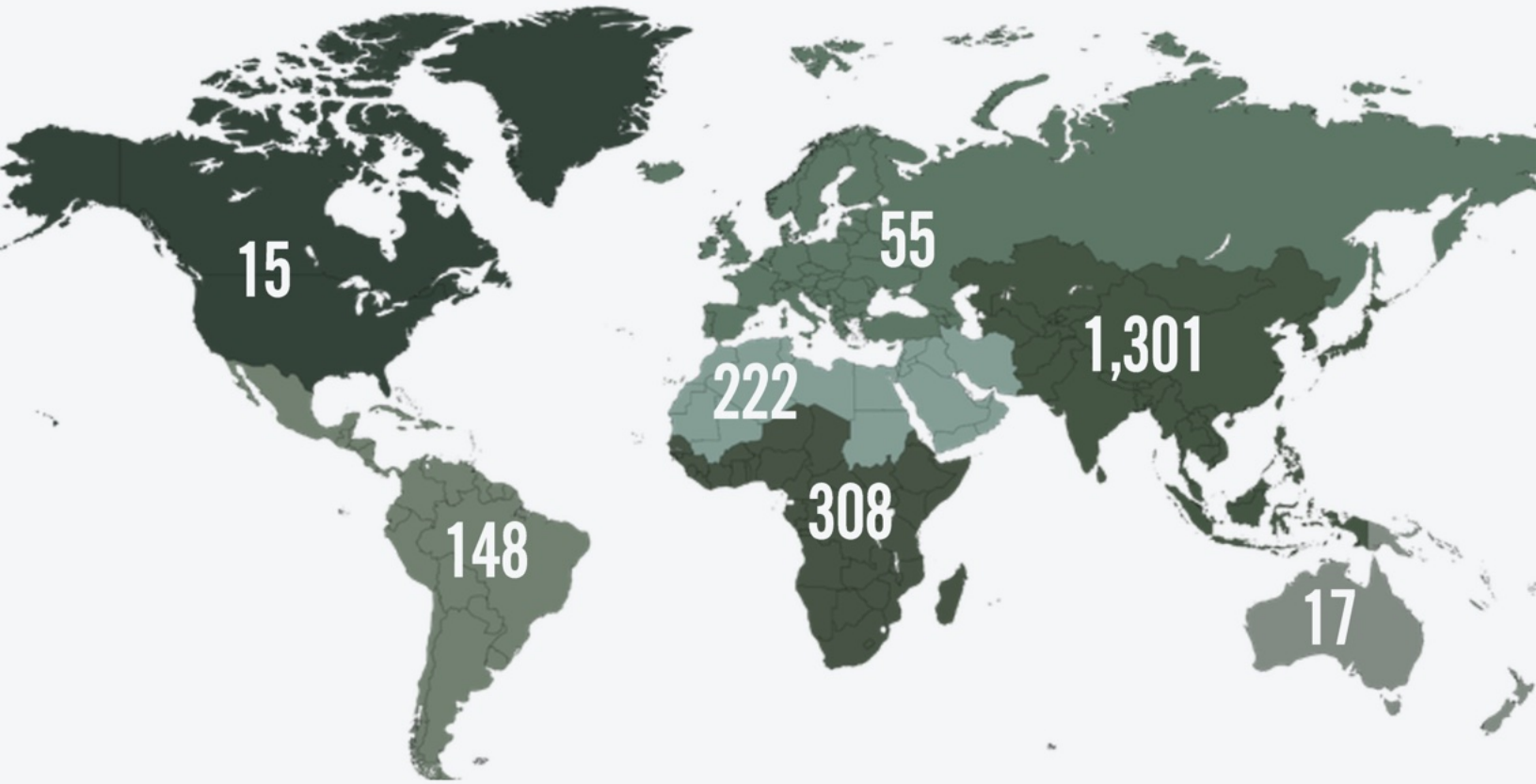
They were wearing white robes and were holding palm branches in their hands.

And they cried out in a loud voice:

“Salvation belongs to our God, who sits on the throne, and to the Lamb.”



PRAYER FOR 2,085 UNENGAGED PEOPLES



The Unengaged by WAGF Region

- North America and Non Spanish Caribbean
- Latin America and Spanish Caribbean
- Africa
- Europe
- Asia
- Middle East
- Oceania

**SIGN UP TO PRAY AT
[HTTPS://DOXA.LIFE/PRAY/](https://doxa.life/pray/)**

65%

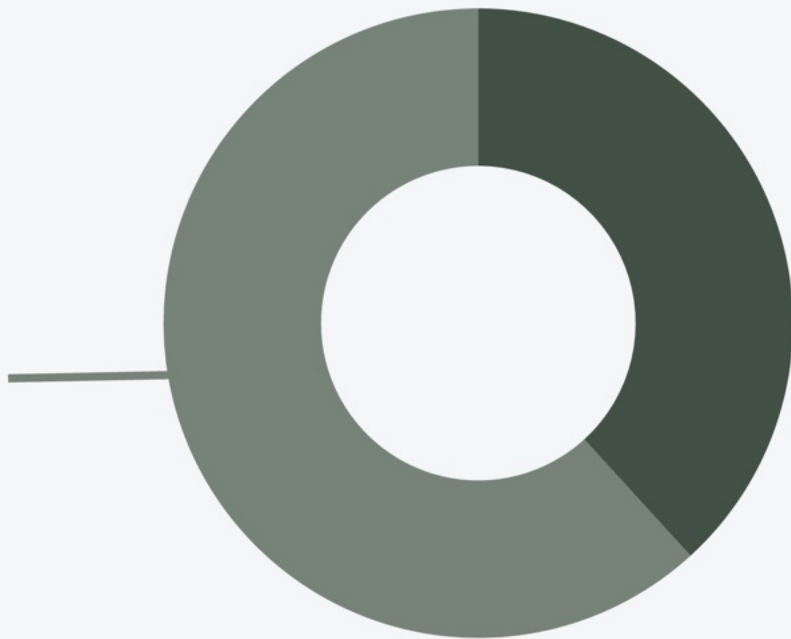
(1,362 of 2,088)
*of unengaged people groups
are in countries where we
have WAGF national
churches.*

160 countries

Contain UUPGs

62%

of these (99 countries)
have WAGF member
churches



WAGF National Church Present	Countries	UUPGs	DEAF UUPGs
No	61	723	62
Yes	99	1,362	61
Grand Total:	160	2,085	123

DOXA IN FUNCTION

Started and Stewarded by World Assemblies of God Fellowship (WAGF) Missions Commission

- DOXA reports to WAGF Missions Commission Lead Team.
- Led by Global Coordinator
- The Lead Team is comprised of seven WAGF Regional Coordinators (regional coordinators work with country coordinators).
- Global Coordinator has an Action Team that serves all DOXA in spheres of Prayer, Training, Foundation, Administration, etc.



THE DOXA PARTNERSHIP

Sending Summit Declaration

*In faith and by God's
grace affirmed this 25th
day of September 2025*



Recognizing that Jesus has called us to partnership, we commit ourselves to God and to one another to partner together globally for the greatest disciple making and church planting movement among the unreached that the World Assemblies of God Fellowship has ever seen. Our commitment includes the following:

That we will remain reliant on the Holy Spirit and the Holy Scripture always and for everything; That we will humbly consider others better than ourselves and will not compete with each other or other agencies, but will respect and honor all God's people in His mission; That we will form a Voluntary, Global, Receiving Partnership committed to working with existing national churches and Assemblies of God General Councils wherever that is possible; That this partnership will not be a sending agency, nor is it replacing the work or role of current sending agencies or their national churches; That sending agencies may collaborate with the partnership to the level they desire. They may choose to send some or all or none of their missionaries through the partnership; That sending agencies will retain final authority over their missionaries, support them, and train them before they are sent to the field;

That the partnership—at the invitation of the sending agency—can receive missionaries, train them on the field, coordinate team placement, and coach them strategically in the field; That the partnership will prioritize the fruitful, long-term, residential engagement of the world's unengaged peoples who currently do not have church planting teams among them with the long-term goal of planting indigenous churches that lead to national churches or integration into existing national churches. We will do this in harmony with MM33; That the partnership will also empower missionaries for the fruitful, long-term, residential engagement of frontier peoples (less than 1 believer in 1,000), under-engaged peoples (less than 1 believer in 100), and the generally unreached (less than 2 believers in 100); That the partnership will be stewarded by the Missions Commission of the World Assemblies of God Fellowship who will appoint and oversee the partnership leaders who may come from any country or agency in the partnership; That the partnership will be called "Doxa" which is the Greek word for "glory" and this name will remind us that Jesus is worthy of glory from every tribe, tongue, people, and nation; That we will partner with all of God's church to take all of God's gospel to all of God's world; That one day there will be a multitude of every people around the throne worshipping God; That Jesus alone will receive all the glory. That Jesus alone will receive all the glory.

ENGAGEMENT INDICATORS

Non-Linear

Prayer Adoption

- Local church
- 1,000 intercessors
- 24 hours of prayer

Research

- Physical visits
- Prayer trips
- Meeting key people/leaders
- Ethnography
- Mapping



Anchor Points

- Compassion
- BAM
- Persons of peace
- Media
- Scripture

First Fruit

- Seekers
- Believers
- Bible studies

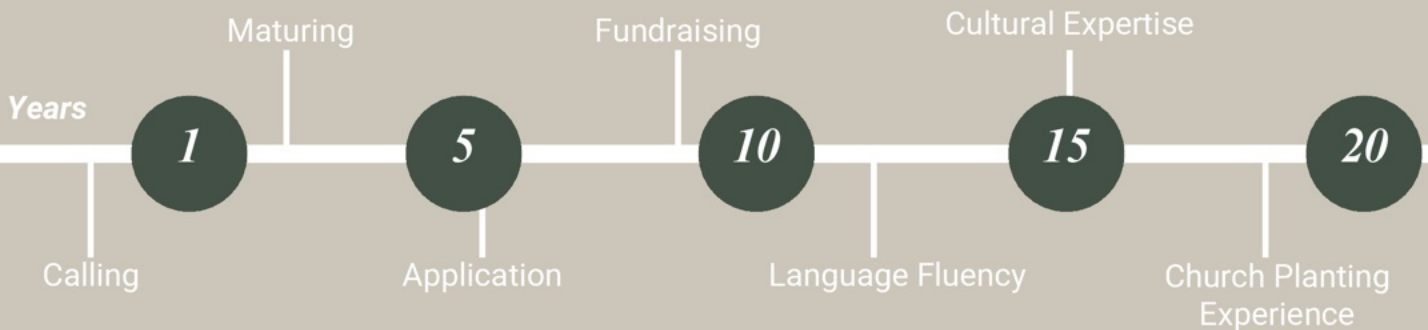


BEYOND MOBILIZATION

to effective engagement of the unreached

Mobilizing a certain number of missionaries toward a dynamic list of unreached, frontier, and under-engaged peoples is one thing. Long-term, effective church planting work among those peoples is another thing. We dare not confuse missionary applicants and compiled lists of the unreached with the long, hard work of making disciples who make disciples and planting churches that plant churches. Our ultimate goal is not a workforce of thousands of missionaries; our ultimate goal is that Jesus is worshipped by a MULTITUDE of every people, tribe, and tongue (Rev. 7:9).

Timeline of Missionary Effectiveness



Mobilization

- UPG lists (dynamic/imperfect)
- Input goals for number of missionaries
- Application and onboarding processes

Ethnographic Research

- Vetting and clarifying people group lists
- Identifying active and potential partners
- Locating where, who, what, etc.

Tactical Missiology

- How do we reach them?
- What will lead to an indigenous church?
- What are the nuances?



Effective missionaries have long careers that include:



Robust training in their first decade with a focus on lifelong learning;



Clear indigenous church principles and focus.



Extensive church planting experience on a church planting team before they lead anything or base outside of the local context to train others;



Intentional partnerships with national churches, near-neighbor peoples, other missionary agencies, and emerging new believers/leaders; and



Basic Engagement

Engagement is one stage in reaching an unreached people. But this must involve more than mere evangelistic activity. Jeff Liverman helpfully insists that what is needed is “effective engagement,” which must include “activity that is strategic and will most likely produce fruit that remains and multiplies.”

Effective engagement includes: (1) apostolic [pioneering] effort in residence; (2) commitment to work in the local language and culture; (3) commitment to long-term ministry; and (4) sowing in a manner consistent with the goal of seeing a church planting movement emerge.

“Unplowed Ground: Engaging the Unreached,” in J. Dudley Woodberry (Ed.), *From Seed to Fruit: Global Trends, Fruitful Practices, and Emerging Issues Among Muslims* (Pasadena: William Carey Library, 2008), 22.

KEY TERMS AND DOXA DEFINITIONS

Churches

A **church** is comprised of baptized disciples joined together by the Holy Spirit who regularly meet together for doctrine, fellowship, communion, and prayer (Acts 2:42).

Practically speaking, for a new gathering to be called a church, at least six baptized disciples are required; however, specific location, meeting frequency, and designated pastor are not—though those normally develop as an indigenous church matures in the five “selves” (self-propagating, self-governing, self-supporting, self-theologizing, self-missionizing).

A **church planting movement** is a multiplication of indigenous churches planting churches that includes at least four streams of four spiritual generations totaling more than 1,000 persons.

People Groups

A **people group** is an ethnolinguistic group who perceive themselves to have a common affinity for one another based on language, culture, religion, and worldview. From the viewpoint of evangelization, it is the largest possible group within which the gospel can spread as a viable, indigenous church planting movement without encountering barriers of understanding or acceptance.

An **unreached people group (UPG)** has approximately two disciples or fewer out of 100 ($\leq 2\%$) and lacks the capacity to establish indigenous churches without cross cultural assistance. Within the overarching UPG category are the following people groups in descending levels of engagement:

1. *Under-Engaged*

An under-engaged people group has approximately one disciple or fewer out of 100 ($\leq 1\%$). More church planting teams are needed to increase fruitful engagement.

2. *Frontier*

A frontier people group has approximately one disciple or fewer out of 1,000 ($\leq 0.1\%$) with no confirmed, sustained movement to Jesus. These groups are often geographically isolated with little to no access to the gospel; thus, pioneer work generally must begin with nonbelievers.

3. *Unengaged*

An unengaged UPG (UUPG) has no known believers or a tiny few (effectively 0%) and lacks the four primary levels of effective engagement:

- a. Apostolic (pioneering) effort in residence
- b. Commitment to work in the local culture and heart language
- c. Commitment to long-term ministry
- d. Sowing the gospel in a manner consistent with the goal of seeing a church planting movement emerge

Broader engagement includes important contributing components that can be done by nonresident partners, including intercessory prayer, Bible translation, compassion/disaster ministry outreaches, media reach, mobilization efforts, leadership training, and work among diaspora.



THE VISION

**GOSPEL ACCESS.
GLOBAL ALIGNMENT.**



No unengaged people groups by 2033



Fruitful engagement of frontier peoples and the under-engaged



Church planting movements among every unreached people on earth



All the above done in partnership with the global body of Christ

20,000+

DOXA PARTNERSHIP MISSIONARIES

STRATEGIC QUESTIONS



Important questions regarding the vision of DOXA to prioritize gospel access and alignment



1. What about the personal call?

DOXA strongly affirms both the individual call of God and the collective call of God. As a partnership we must ask ourselves where the Church is not yet established. It is there we must spend and be spent for Jesus' sake. All DOXA personnel are invited to align their individual call to this collective call.

2. What about the millions of lost in “reached” countries?

DOXA strongly believes in partnership with indigenous churches. In many contexts that are “reached,” our World Assemblies of God Fellowship (WAGF) partners are now able to evangelize the lost of their own people or nation. Where a national church is not yet indigenous (self-supporting, self-governing, self-propagating, self-theologizing, and self-missionizing), we are glad to help toward those goals at their invitation.

3. What do we mean by effective engagement ?

In DOXA, we primarily mean that there is a missionary or local apostolic team resident on the ground ministering in the local language and cultural context through the practices that will best lead to an indigenous national church. We recognize that in a global, urban, technology-centered world there are developing means of engagement that empower creativity. We also believe in the great potential of “proximate engagement,” which means partnering with our national churches to engage the unengaged who live near or around them.

4. What kind of churches will we plant among the unreached ?

Because DOXA is a part of WAGF, we want to plant churches that ultimately align with the worldwide

Assemblies of God. We realize these may be house church movements that forge their own identity and connection to WAGF or movements that decide to align with established national churches as a district, branch, or some other creative way of alignment.

5. What about the work of other agencies and churches?

We do not think that DOXA can reach the world nor obey the Great Commission without cooperating with God's global body—the Church universal. We bless all of God's children and rejoice in every soul saved and every church planted by every Bible-preaching church. As we set goals to prioritize the unreached, we recognize many others are doing their part. We want to bless, serve, honor, and partner with them wherever and whenever possible.

6. What about diaspora peoples in a globalized world?

DOXA sees a stewardship responsibility to respond to the world as it stands in our generation—not the world that was, nor the world as we wish it to be. Therefore, wherever segments of peoples and populations do not have adequate gospel access, we will spend and be spent there.

Wherever people do not have a “version” of the

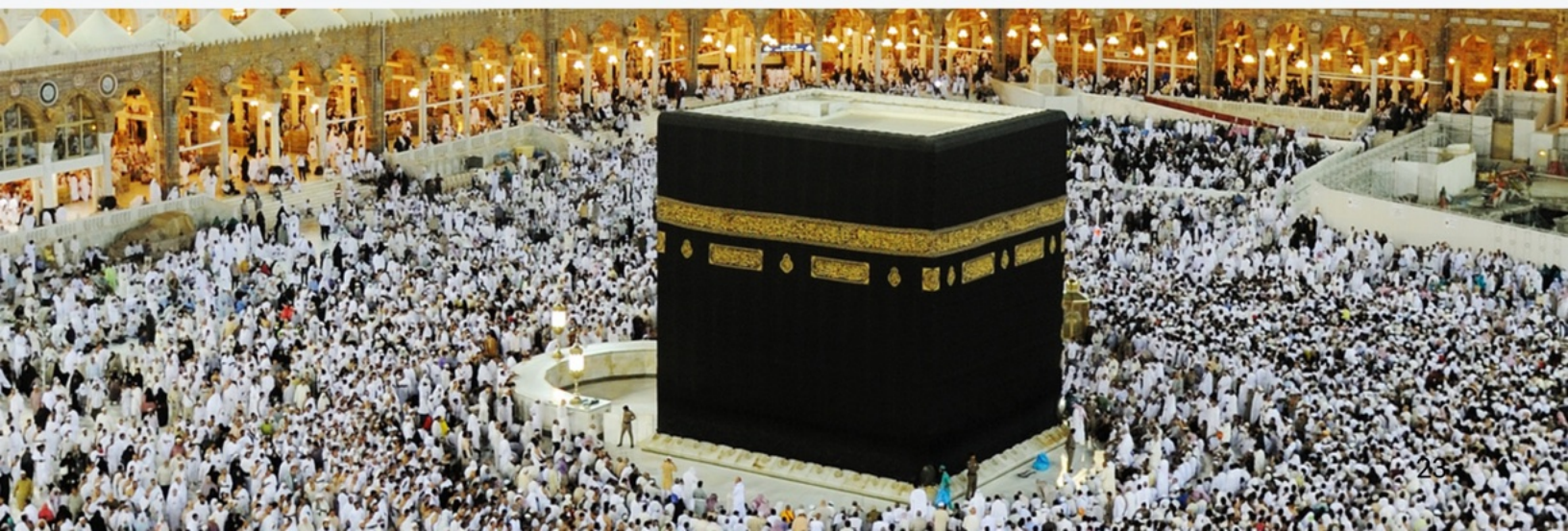
gospel they can understand, or a church that can “incorporate” them into community life, we will send apostolic church planting teams wherever in the changing world that may be. What will guide our DOXA missiology are the gospel access and gospel alignment questions. Where is a people or segment of the population without gospel access? That is where we will engage, and we will align all our personnel to that end.

7. What about the United States?

While there are increasing numbers of unreached diaspora peoples who need effective gospel engagement, the mandate of DOXA is outside our home country. We continue to affirm the work of home missions, local ministries, and our many wonderful AG churches which have workers or works assigned to engaging these precious unreached peoples whom God has brought to our nation.

8. Why are we focusing on Unengaged Unreached People Groups (UUPGs)?

We believe the need for gospel access most urgently highlighted by those completely unengaged is going to be used by the Holy Spirit to call forth waves of new workers. As we aim towards the unengaged, we rejoice that many will find their place in the harvest among Frontier Peoples, the Unengaged, and among other places and peoples without adequate gospel access.



IN THE POWER OF THE HOLY SPIRIT

We commit ourselves to God and His global family for the mobilization of THOUSANDS of cross-cultural missionaries, focused on gospel access and globally aligned by 2033.



WE ADOPT THE FOLLOWING INTEGRATED GOALS AS OUR STEWARDSHIP RESPONSIBILITY:

1. By 2033, there is no such thing as an unengaged people group on earth because every people group is being engaged.
2. By 2033, every unreached people group (with a frontier people group priority) is being progressively and effectively engaged by multiple missionary teams and national partners.
3. By 2033, all our global national churches are actively and progressively mobilized towards effective engagement among the unreached through sending their own sons and daughters.
4. All DOXA missionaries are professionally and progressively trained in missiology. They are increasingly culturally and linguistically functional, are everyday disciple makers, and are unified and aligned with our goal of adequate gospel access for unreached peoples globally.

God is calling us as the Assemblies of God family worldwide to send our sons and daughters—just like He sent His Son.

The Holy Spirit birthed the Assemblies of God that we be dedicated to Him and to one another for the greatest evangelization the world has ever seen.

48 percent of our world remains unevangelized.

3.9 billion do not have adequate gospel access.

6,602 people groups remain unreached.

4788 Frontier peoples desperately need more missionaries.

2,085 people groups are unengaged.

Together we *all* have a part to play in extending gospel access to all peoples everywhere. Together we can make disciples of all the nations.

Together we can plant churches that plant churches among the unreached.

Together we can mobilize, send, and sustain *thousands* of new missionaries.

Let us be globally aligned, for we can only establish the Church among all peoples everywhere as we work together.

To Jesus alone be the glory from every tribe, tongue, people, and nation forever.



Rev. Dick Brogden

DOXA Global Coordinator
doxacoordinator@gmail.com



Rev. Dominic Yeo

Chairman of the World Assemblies of
God Fellowship (WAGF)



Rev. John Easter

Executive Director of Assemblies of
God World Mission (USA)
Chairman of WAGF Missions
Commission

DOXA PARTNERSHIP CONTACT INFORMATION

Email: thedoxapartnership@gmail.com

Website: doxa.life



DOXA

GLOBAL PARTNERSHIP FOR THE UNREACHED